

Make sure to read this instruction sheet before use. Additionally, store this sheet so that it can be referenced when needed.

For eyestrain from overuse of smartphones

IRIS FON BREAK IRIS BREAK

Class 2 OTC drug

<Eye Drops>

- ◆ Eye fatigue caused by modern-day use of smartphones is caused by the continued shortening of the ciliary muscles as we constantly focus on nearby objects. It can also be caused by being continuously exposed to light from a close distance or by continuously moving your eyes from side to side and up and down.
 - ◆ IRIS FON BREAK improves eye fatigue and inflammation caused by light damage due to long work hours.
 - ◆ In addition to ingredients that improve the ability to adjust focus, ingredients that provide nutrition to the eyes and that promote corneal tissue metabolism are combined at maximum concentration according to standards¹. Strongest penetration² and refreshingly cool.
 - ◆ Contains 12 types of active ingredients, the most in Japan³.
 - *1 Contains the maximum concentration within the approved manufacturing and sales standards for general ophthalmic drugs
 - *2 Within the IRIS series
 - *3 Contains the highest number of active ingredients within the manufacturing and sales approval standards for general ophthalmic drugs
- ¹Approval standards¹ refers to the scope of pharmaceutical products established by the Ministry of Health, Labour and Welfare in order to streamline approval procedures



Precautions for Use



Things To Consult On



1 The following individuals should consult with their doctor, pharmacist, or a registered seller before using this medicine

- (1) Persons receiving treatment from a doctor.
- (2) Persons with a history of allergic reactions caused by medicines, etc.
- (3) Persons with the following symptoms:
 - Intense eye pain
- (4) Persons who have received the following diagnoses:
 - Glaucoma

2 If any of the following symptoms appear after you have used this medicine, you may be experiencing side effects. As such, please discontinue use immediately and consult with your doctor, pharmacist, or registered seller, bringing a copy of this instruction sheet with you

Relevant Area	Symptoms
Skin	Rash, redness, itching
Eyes	Red eye, itching, swelling, stinging and pain

3 In case of the following, discontinue use and consult with your doctor, pharmacist, or registered seller, bringing a copy of this instruction sheet with you

- (1) Your blurred vision does not improve.
- (2) Your symptoms do not improve after using the product for 5 to 6 days.

Efficacy

Eye inflammation caused by UV rays or other light rays (e.g. snow blindness), eye fatigue, conjunctival hyperemia, itchy eyes, prevention of eye diseases (e.g. after swimming, dust and sweat in the eyes), blepharitis (inflammation of the eyelids), blurred vision (e.g. with excessive eye discharge), and discomfort when wearing hard contact lenses

Usage and Dosage

Apply to eyes 5 to 6 times daily, 2 to 3 drops each time.

Note:

- (1) Strictly follow the prescribed usage and dosage.
- (2) Excessive use may cause you to experience abnormal glare or even cause bloodshot eyes.
- (3) If this medicine is being used by a child, ensure it is used under the guidance and supervision of a parent or guardian.
- (4) Do not let the tip of the container touch your eyelids or eyelashes. Do not use if the solution is cloudy.
- (5) Do not use while wearing soft contact lenses.
- (6) Use only for application in the eyes.

Ingredients

Ingredients	Amount	Action
Neostigmine methylsulfate	0.005%	Improves eye fatigue by improving eye focusing ability
Taurine	1%	Provides important nutrition to the eyes and improves eye fatigue.
Potassium L-aspartate	0.9%	
Pyridoxine hydrochloride (vitamin B ₆)	0.05%	Activates weak eye tissue metabolism (improves eye fatigue).
Panthenol	0.05%	
Flavin adenine dinucleotide sodium (active vitamin B ₂)	0.05%	Promotes corneal tissue metabolism and repair.
Epsilon-aminocaproic acid	1%	Relieves eye inflammation.
Berberine chloride hydrate	0.015%	
Dipotassium glycyrrhizinate	0.1%	
Tetrahydrozoline hydrochloride	0.01%	Reduces redness of the conjunctiva (whites of the eyes, etc.).
Chlorpheniramine maleate	0.03%	Antihistamine effect to relieve itching in eyes.
Chondroitin sulfate sodium	0.05%	Tear-retaining effect protects the surface of the cornea and keeps your eyes moist.

Additives: Polysorbate 80, eucalyptus oil, l-menthol, disodium edetate, boric acid, benzalkonium chloride, pH-adjusting agent

Note:

You may feel a sweet taste in your mouth after dropping this product into your eyes. This is caused by the active ingredient dipotassium glycyrrhizinate, so there is no need to worry.

Precautions for Storage and Handling

- Ensure the cap is tightened securely and store the medicine in a cool place that is out of direct sunlight.
- Keep out of reach of children.
- Do not replace the medicine into a different container. (This may result in misuse or a change in quality)
- Do not share eye drops with anyone else.
- Do not place eye drops in high-temperature locations, such as on the dashboard of your car. (The container may deform or the quality of the solution may deteriorate.)
- If the drug spills and stains your clothes while applying to the eye, immediately wash with water. (The yellow color of this drug is due to the ingredients berberine chloride hydrate and vitamin B₂.)
- Do not use this product beyond its expiration date. Use this medicine as soon as possible after opening, even if still within the expiration date. (In order to ensure quality.)
- The ingredients may crystallize on the tip of the container or inside the cap depending on the storage conditions. In that case, please wipe away the crystals gently with clean gauze before use.



Precautions and Correct Technique for Eye Drop Application

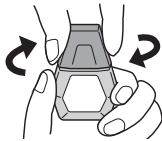
How to Open and Close the Cap

Please open and close the cap with the cap facing upward.



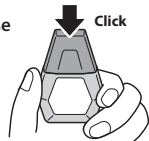
1 How to open

Hold the container by the sides and twist the cap



2 How to close

Push the cap straight down until you hear a click



If the container is opened and closed by holding the widest part, the liquid may spill out.

Precautions

- Avoid contact between the tip of the container and your eyelids or eyelashes. **Eye discharge** or **microorganisms** may contaminate the solution or cause it to become cloudy.

Applying the Product Correctly

- Wash your hands thoroughly and avoid touching your eyes directly with your fingers.
- Look up slightly and pull your lower eyelid down with your fingers. Apply drops onto the inner side of your eyelid.



Disclaimer on Multilingual OTC Product Information

- This product is a pharmaceutical product approved under a Japanese law, the Law for Ensuring the Quality, Efficacy and Safety of Drugs and Medical Devices, with a view to its sale and use in Japan.
- Multilingual product information is a translation of the product labeling written in Japanese and provided for your information only. It does not warrant that its contents and the product itself conforms to laws and regulations in countries other than Japan.
- Multilingual product information is a tentative translation by the provider (or Our Company), and may be modified or altered without notice.
- The provider (or Our Company) assumes no responsibility for any occurred problem attributable to the contents of the multilingual product information.